

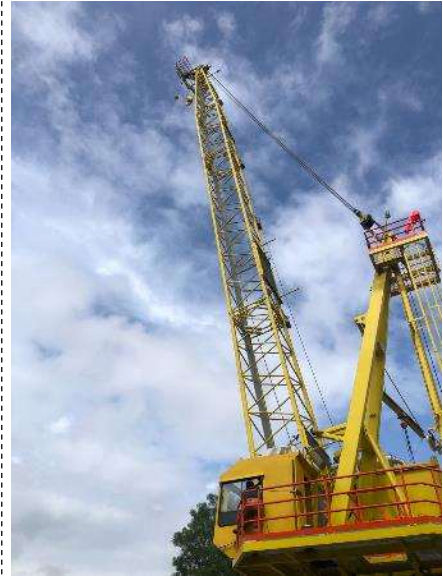


OFFSHORE CRANES AVAILABLE FOR SALE

SeaCrane R550-120 (30 up to 50 MT Crane) – 1 Unit for sale

- Offshore Pedestal Mounted Crane, API 2C 7th edition Crane. / YOM -2014
- Boom Length – 120 ft (36.5m), lattice boom
- Main Hoist SWL – 30 or 50 Metric Ton @ 4-Part Line (based on block configuration.)
- Aux. Hoist SWL – 15 Metric Ton @ 1-Part Line
- Man riding (1.4 MT).
- Braden Winches.
- New unused Diesel Engine (Caterpillar 3416) Operated HPU with Hydraulic and Electrical Starter.
- New Hydraulic Fittings etc and with E & I equipment.
- Eskridge Gear Boxes.
- New Wire ropes.
- New Slew Ring Bolts.
- Full set of documentation available
- Refurbished and recertified in 2025

Note- Crane ready for delivery. Lead time for delivery – <1 month.



Seatrac/SeaKing Crane S6020 (60 MT Crane) – 2 Units for Sale

- Offshore Kingpost Crane, API 2C, 5th Edition.
- Year of Manufacture - 1995
- Boom Length – 120ft (36.5 m), lattice boom
- Main Hoist SWL – 60 Metric Ton
- Aux. Hoist SWL – 15 Metric Ton
- Diesel Engine Operated HPU. Engine to be fully overhauled.
- Manriding.
- New King Post by OEM.
- New Hydraulic Hoses and system with new wire ropes.
- All electrical wirings etc to be replaced new.
- Full set fo original OIEM documentation available.

Note: Crane currently dismantled and being prepared for refurbishment. Lead time for delivery – 4 months.



Please contact us for further information:



RABUTEC SDN. BHD. / RABUTEC (SINGAPORE) PTE. LTD.

E-mail: enquiry@rabutec.com Website: www.rabutec.com

Office: Tel: +60 3-4050 7291 / +60 3-4050 6291

Fax: +60 3-4050 3291

Mobile (WhatsApp) Tel: +6019 3521776 / +6012 3939251

Service Center: Tel: +60 12-9139 251 / +60 12-8839 251



Nautilus 180L3-120 (24-30 MT Crane) – 1 Unit for rental

- Offshore Pedestal Mounted Crane, API 2C Crane.
- Boom Length – 120 ft (36.5m), lattice boom
- Main Hoist SWL – 24 Metric Ton. Maximum Capacity with 100 ft Boom - 30 MT
- Man riding winch.
- Diesel powered HPU, New hydraulic hoses and electrical wiring.
- To be refurbished and supplied with fully overhauled engine.

Note - Crane to be refurbished if required. Parts available in stock – Lead time for delivery – 3 months.



SeaCrane K45-100

- Offshore Pedestal Crane , API 2C, 7th edition
- Boom Length – 30m ; Fixed Boom.
- Main Hoist SWL – 30 MT
- Aux Hoist – 4 MT
- Diesel Engine Operated HPU
- Man riding Crane.

(Note: Crane in good condition. Parts available in stock for overhaul and service if required, 2 months delivery).



New Cranes (API 2C)

- Designed and manufactured to be durable, easy to service and maintain.
- Certified to meet or exceed API 2C standards.



Telescopic Boom (5 ton to 100 ton)



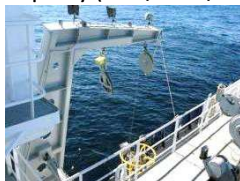
Lattice Boom (10 ton to 250 ton)



Fixed Boom (2 ton to 100 ton)

Davits / Slew Jib Crane / Provision Crane (New & Used)

- 0.5 tons to 5 tons
- Normal, Electric or Diesel
- Designed & built to offshore standards.
- Certified by third party (ABS/DNV/LR)



Davit



Jib Crane

Please contact us for further information:



RABUTEC SDN. BHD. / RABUTEC (SINGAPORE) PTE. LTD.

E-mail: enquiry@rabutech.com Website: www.rabutech.com

Office: Tel: +60 3-4050 7291 / +60 3-4050 6291

Fax: +60 3-4050 3291

Mobile (WhatsApp) Tel: +6019 3521776 / +6012 3939251

Service Center: Tel: +60 12-9139 251 / +60 12-8839 251